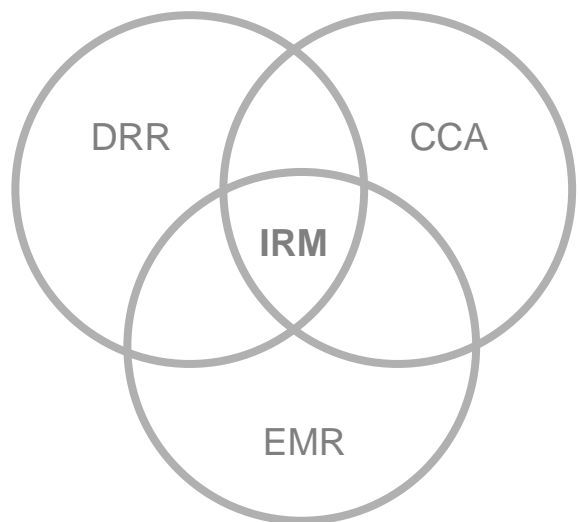




# Integrated Risk Management (IRM) Mainstreaming at the Local Planning Level



Presented by:  
**MARIA LINA D. PUNZALAN**  
City Planning and Development Coordinator



# COMPREHENSIVE DEVELOPMENT PLAN

**2019-2025**



# City Planning and Development Coordinator

## - MANDATES -

The planning and development coordinator shall take charge of the planning and development office and shall:

- **Formulate integrated economic, social, physical, and other development plans and policies** for consideration of the local government development council;
- Conduct continuing studies, researches, and training programs necessary to evolve plans and programs for implementation;
- Integrate and coordinate all sectoral plans and studies undertaken by the different functional groups or agencies;
- Monitor and evaluate the implementation of the different development programs, projects, and activities in the local government unit concerned in accordance with the approved development plan;
- **Prepare comprehensive plans and other development planning documents** for the consideration of the local development council;
- Analyze the income and expenditure patterns, and formulate and recommend fiscal plans and policies for consideration of the finance committee of the local government unit concerned as provided under Title Five, Book II of this Code;
- Promote people participation in development planning within the local government unit concerned;
- **Exercise supervision and control over the Secretariat of the local development council;** and
- Exercise such other powers and perform such other functions and duties as may be prescribed by law or ordinance.

# Local Development Council

## - FUNCTIONS -



The provincial, city, and municipal development councils shall perform the following functions:

- **Formulate long-term, medium-term, and annual socioeconomic development plans and policies;**
- **Formulate medium-term and annual public investment programs;**
- Evaluate and prioritize socioeconomic development programs and projects;
- Formulate local investment incentives to promote the inflow and direction of private investment capital;
- Coordinate, monitor, and evaluate the implementation of development programs and projects; and
- Perform such other functions as may be provided by law or component authority.



**DILG Memorandum  
Circular No. 2019-172  
dated 17 October  
2019 “ Compliance of  
the Local Government  
Units (LGUs) on the  
Preparation/Updating  
of the Comprehensive  
Land Use and  
Comprehensive  
Development Plans**

**MMDA Technical  
Assessment of the  
City of Malabon  
Development Plan  
2017-2020  
conducted in 24  
September 2019  
and 1 October  
2019**

# **Preparation Meeting for the Formulation of CDP 2019-2025**

**October 28, 2019/ Planning Office**



**DEPARTMENT OF THE INTERIOR AND LOCAL GOVERNMENT  
(DILG)**

**EnP Ana Jury H. Castillo**  
CDP Training Resource Person and Facilitator

**ASSISTANCE AND COOPERATION FOR RESILIENCE AND  
DEVELOPMENT INC. (ACCORD)**

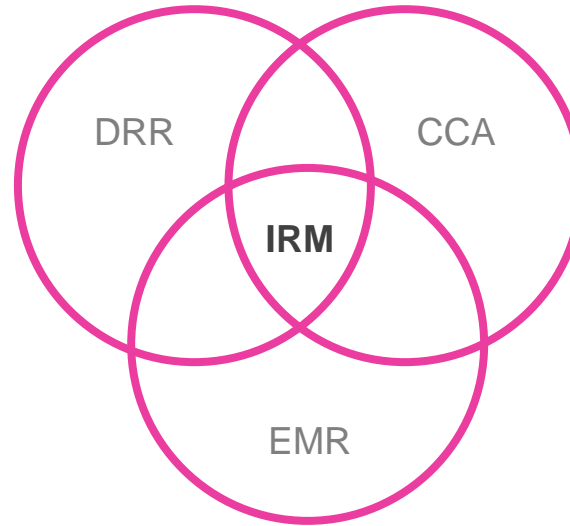
**Ms. Erica Chester Bucog, Partners for Resilience ACCORD**  
Project Management  
**Ms. Stella Dulce, ACCORD IRM Consultant**  
**Mr. Orly Oboza**



# Formulation of CDP 2019-2025

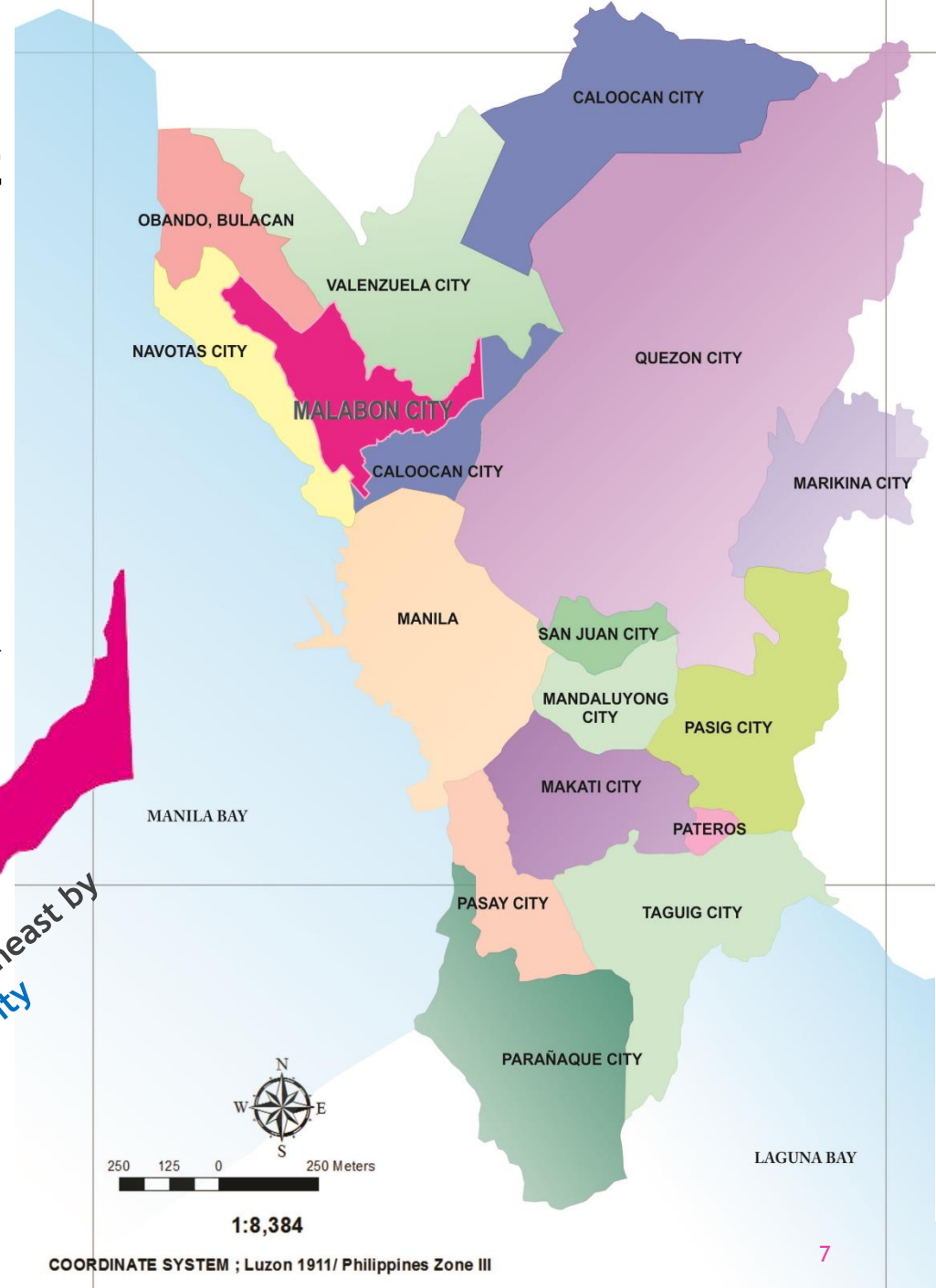
November 13-15, 2019/ Manila Grand Opera Hotel

Review of Demographic and Socio-Economic Profile of Malabon, with the technical assistance from the Commission on Population (PopCom)-NCR conducted last Mar. 7-8, 2019, July 17, 2019, Aug. 14-16, 2019, Sept. 20, 2019, Oct. 9-11, 2019 and Feb. 4-11, 2020



**MALABON** is a coastal town situated in the northern part of Metro Manila

bounded on the north and northeast by **Valenzuela City**  
on the west and southwest by **Navotas City**  
on the east and southeast by **Caloocan City**



**2015 Population**  
**365,525**

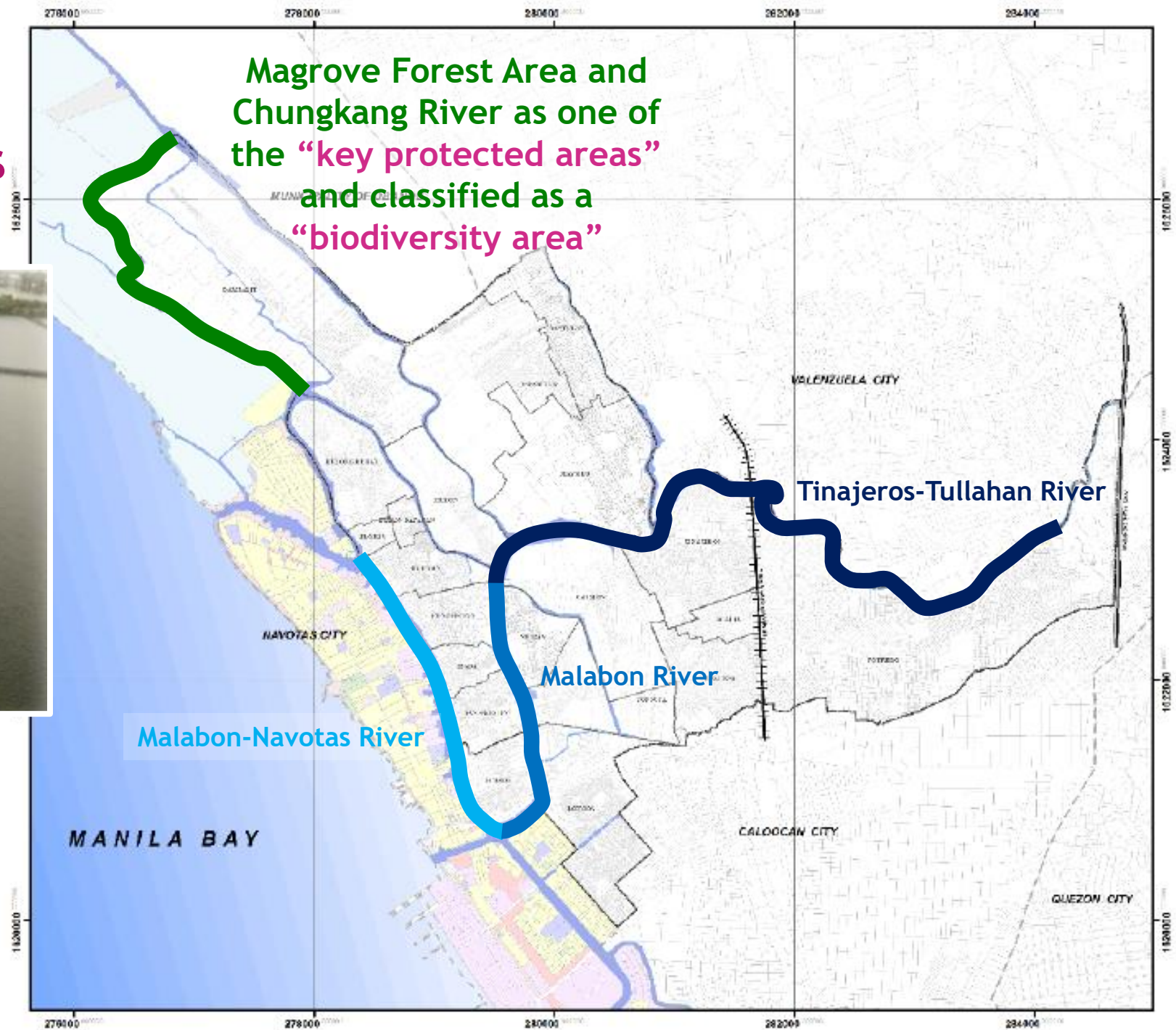
**Total Land Area**  
**1,571.40**  
(approx. 2.5% of Metro Manila)

**Land Use:**

Use	Area (has.)	Percentage to Total
Residential	515.15	37.67%
Socialized Housing	55.63	4.07%
Fishpond	195.8	14.32%
Cemetery	6.43	0.47%
Commercial	235.24	17.20%
Industrial	305.85	22.37%
Institutional	41.57	3.04%
Parks	8.75	0.64%
Utilities	3.04	0.22%
Roads	101.71	
Waterways	102.23	
Total Land Use	1,571.40	
Total Land Area	1,367.46	100.00%

(Source: Comprehensive Land Use Plan 2018-2027)

# Malabon is rich with 25 Rivers and Waterways





## MALABON VISION

“outward-looking”  
component

**“Sentro ng kulinarya sa National Capital Region,  
lungsod na may mayamang kasaysayan,  
pamana at kultura,**

**matatag na ekonomiya, malinis at luntiang  
kapaligiran, ligtas na pamayanan, responsable  
at respetadong malabonian sa ilalim ng  
mapagkalinga, organisado at matapat na  
pamahalaan”**

“inward-looking”  
component

Vision Elements	Descriptor
<b><u>OUTWARD-LOOKING:</u></b>	Sentro ng kulinarya sa National Capital Region, lungsod na may mayamang kasaysayan, pamana at kultura
<b><u>INWARD-LOOKING:</u></b>	
1. People as a Society (Social Devt. Sector)	responsable at respetadong Malabonian; ligtas na pamayanan
2. Local Economy (Economic Devt. Sector)	Matatag na ekonomiya
3. State of the Natural Environment (Environment and Natural Resources Mngt. & Devt. Sector)	malinis at luntiang kapaligiran; ligtas na pamayanan
4. Condition of the Built Environment (Infrastructure Devt. Sector)	ligtas na pamayanan; malinis na kapaligiran
5. Capacity and Quality of the Local Leadership/ Governance (Institutional Devt. Sector)	mapagkalinga, organisado at matapat na pamahalaan

# Formulation of CDP 2019-2025


November 13-15, 2019/ Manila Grand Opera Hotel

## VISION-REALITY GAP ANALYSIS



# Formulation of CDP 2019-2025

## PLANNING SESSIONS



**Workshop for the  
drafting of the  
Malabon City's  
Development Plan  
2019-2025,  
November 13-15, 2019**

**Sectoral Meetings for  
the Formulation of  
CDP 2019-2025  
November 19-21, 2019**

**Finalization of CDP  
2019-2025  
November 28-29, 2019**

# Highlights of the CDP 2019-2025

## Social Sector

Provision of safe, decent and affordable housing- disaster -resilient houses

Implementation of the City Shelter Plan

Infra-audit on business establishments

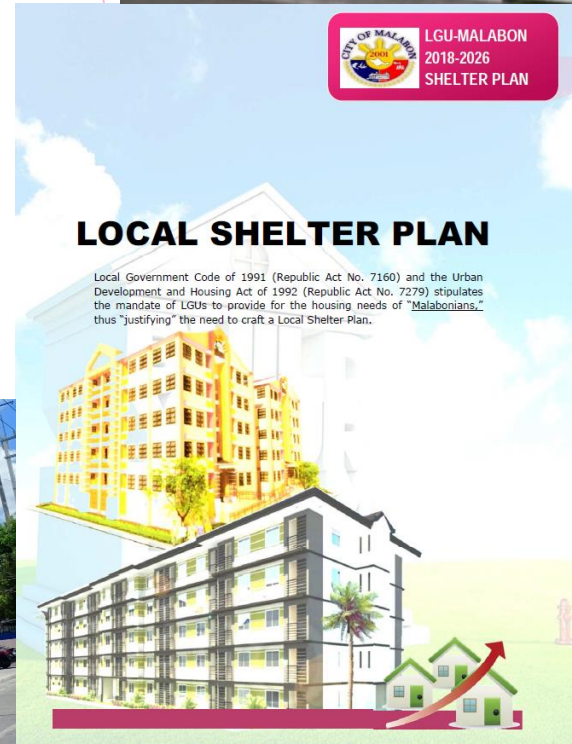
Establishment of Super Health Centers



CITY OF MALABON  
LGU-MALABON  
2018-2026  
SHELTER PLAN

### LOCAL SHELTER PLAN

Local Government Code of 1991 (Republic Act No. 7160) and the Urban Development and Housing Act of 1992 (Republic Act No. 7279) stipulates the mandate of LGUs to provide for the housing needs of "Malabonians," thus "justifying" the need to craft a Local Shelter Plan.



# Highlights of the CDP 2019-2025

## Economic Sector

Strengthen partnership with the business sector

Training on the formulation of business continuity plan

Infra-audit on business establishments

Economic recovery program

Livelihood assistance program



# Highlights of the CDP 2019-2025

## Environment Sector

Maintaining healthy lives

Reducing air, water and soil pollution  
and contamination

Mangrove and other reservations  
management

Agriculture and fisheries support  
program

Disaster risk reduction and management  
program



# Highlights of the CDP 2019-2025

## Infrastructure Sector

Green designs for buildings and other facilities

Water-control measures while taking into consideration the individual characteristics of each surrounding bodies of water

Improvement of road network and bridges (installation of LED streetlights, pedestrian-friendly lanes and walkways, bicycle lanes)

Development or improvement of existing and proposed open spaced, linear parks, eco parks, plazas and vertical gardens

Construction/ upgrading of facilities



# Highlights of the CDP 2019-2025

## Institutional Sector

Improve the City's crisis management

Digitalization program

Capacity development

Increase capacity to access the needed resources to finance the programs and projects identified





## MISSION

**“Magbigay nang angkop at sapat na paglilingkod mula sa puso para sa lahat”**

**# P R O M I S E !**





**Maraming Salamat Po!**